



888-321-3539 or visit [uniflexroof.com](http://uniflexroof.com)

101 PROSPECT AVE NW, CLEVELAND, OHIO



**UNIFLEX**<sup>®</sup>  
Fluid Applied Roofing Systems

# PRODUCT PORTFOLIO





# Table of Contents

|  |       |
|--|-------|
| Benefits of UNIFLEX® Fluid Applied Roofing Systems | 4-5   |
| Reflective White Roof Coatings                     | 6     |
| Pigmented Roof Coatings                            | 7     |
| Aluminum Roof Coatings                             | 8     |
| Asphalt Emulsion Coatings                          | 9     |
| Basecoats and Primers                              | 10-11 |
| Patch and Repair: Roof Coatings, Fabrics and Tapes | 12-13 |
| Patch and Repair: Roof Sealants                    | 14-15 |
| Part Numbers                                       | 16-19 |

# Benefits of UNIFLEX® Fluid Applied Roofing Systems

## No Tear-Offs

- **No Disruption To Occupants.** With UNIFLEX, there is no need to close the building during installation. The non-toxic formulation means no disruption to occupants and no interruption of business.
- **Lightweight Solution.** Unlike traditional roof replacement, UNIFLEX Fluid Applied Roofing Systems provide a lightweight solution to roofing needs. It's ounces, not pounds, per square foot.

## Extend the Life of Your Roof

- **Longer Building Life Cycle.** UNIFLEX Fluid Applied Roofing Systems are installed onto existing roofs to extend the service life of the facility.
- **Great Weatherability.** UNIFLEX Systems resist blistering, chalking, checking, cracking and flaking – protecting the roof from further weathering and degradation.

## Sustainable Solutions

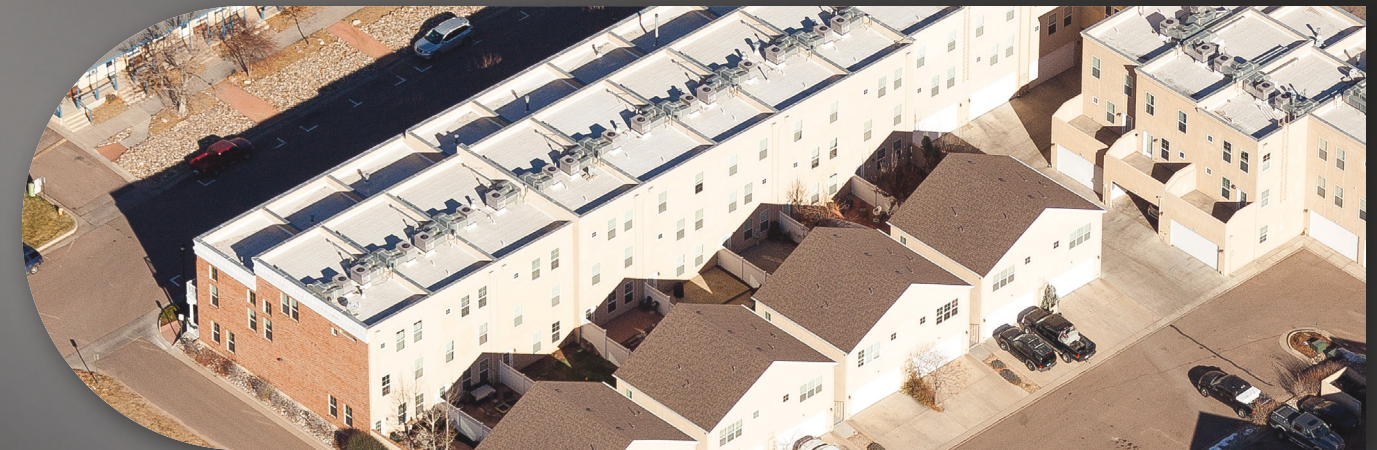
- **Lower Disposal Costs.** Coatings can be reapplied to continuously refresh the roof without tearing off existing roofing.
- **Environmentally Responsible.** The formulations of UNIFLEX Fluid Applied Roofing Systems do not require hot kettles or flames during installation. It's a safer process and the environmental benefits are significant.
- **Lower Roof Temperatures.** Highly reflective white coatings reflect 85% of the sun's radiant heat, dramatically lowering the temperature of the underlying roof and preventing further degradation.

## Seamless Waterproofing

- **Proven Performance.** UNIFLEX Systems eliminate seams, the most common source of roof leaks. Our thick, flexible protective coatings provide lasting, easy-to-maintain waterproof protection.

## Energy and Utility Savings

- **Significant Energy Savings.** According to EnergyStar.gov, having a white, reflective roof reduces the roof's surface temperature by up to 100 °F, significantly decreasing the amount of heat transferred into the building and reducing peak cooling demands. Higher reflectivity = lower energy consumption and lower cooling costs.
- **Cost-Saving Installation.** UNIFLEX Fluid Applied Roofing Systems are typically easier to install and maintain than a conventional tear-off roof and also eliminate unnecessary construction waste. This means such projects generally cost a fraction of the price of a new roof installation.
- **Utility Rebates.** Some utility companies offer rebates to building owners who conserve energy by using white reflective roof coatings. Contact your electric utility provider for energy rebate offers. Further details can be found at [www.dsireusa.org](http://www.dsireusa.org).





# Reflective White Roof Coatings

Reflective Roof Coatings provide superior flexibility and durability. UNIFLEX® offers elastomeric roof coatings in highly reflective white, as well as custom shades in a variety of colors.



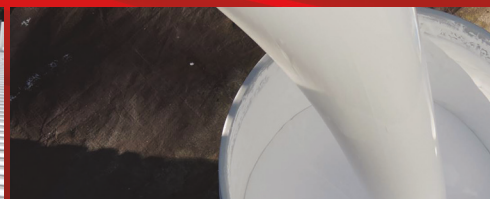
# Pigmented Roof Coatings

UNIFLEX offers a variety of package colors and tintable bases.



| PRODUCT NAME              | SILICONE44™ WHITE ROOF COATING   | SILICONE22™ LOW-SOLID WHITE ROOF COATING  | PREMIUM SOLVENT-BASED ELASTOMERIC WHITE  | PREMIUM ELASTOMERIC WHITE   | COMMERCIAL GRADE ELASTOMERIC WHITE   | COOLMAX41™ HI-BUILD ELASTOMERIC ROOF COATING WHITE  | PREMIUM ELASTOMERIC SEDONA TAN  | PREMIUM ELASTOMERIC TINT BASES   | PREMIUM ELASTOMERIC BLACK   |
|---------------------------|--|---|--|---|--|---|---|--|---|
| TECHNOLOGY                | 100% SILICONE  | SILICONE  | SOLVENT-BASED THERMOPLASTIC RUBBER   | 100% ACRYLIC ELASTOMERIC  | 100% ACRYLIC ELASTOMERIC   | 100% ACRYLIC ELASTOMERIC  | 100% ACRYLIC ELASTOMERIC  | 100% ACRYLIC ELASTOMERIC   | 100% ACRYLIC ELASTOMERIC  |
| FEATURES AND BENEFITS     | <ul style="list-style-type: none"> <li>High solids</li> <li>Ponding water resistance</li> <li>Outstanding adhesion</li> <li>Excellent flow and leveling</li> </ul> | <ul style="list-style-type: none"> <li>Low solids</li> <li>Ponding water resistance</li> <li>Outstanding adhesion</li> <li>Excellent flow and leveling</li> </ul> | <ul style="list-style-type: none"> <li>Premium grade</li> <li>Outstanding adhesion</li> <li>Superior reflectivity</li> <li>Resists cracking and peeling in ponding water situations</li> <li>Excellent waterproofing capabilities</li> <li>Reduces surface temperatures, minimizing thermal expansion and contraction</li> </ul> | <ul style="list-style-type: none"> <li>Premium grade</li> <li>Outstanding adhesion</li> <li>Resists cracking and peeling</li> <li>Excellent waterproofing capabilities</li> <li>Reduces surface temperatures, minimizing thermal expansion and contraction</li> </ul> | <ul style="list-style-type: none"> <li>Commercial grade</li> <li>Excellent adhesion and reflectivity</li> <li>Great performance and value</li> <li>Excellent waterproofing capabilities</li> </ul> | <ul style="list-style-type: none"> <li>Formulated for desert climate conditions</li> <li>Easy application for high film build and superior hide</li> <li>Excellent flexibility to allow for expansion and contraction of the roof</li> <li>Dirt pickup resistant</li> </ul> | <ul style="list-style-type: none"> <li>Premium grade</li> <li>Outstanding adhesion</li> <li>Resists cracking and peeling</li> <li>Excellent waterproofing capabilities</li> </ul> | <ul style="list-style-type: none"> <li>Premium grade</li> <li>Excellent waterproofing capabilities</li> <li>Can be custom matched or shaded to the Sher-Color™ Palette</li> <li>Tinted with CCE colorant system</li> </ul> | <ul style="list-style-type: none"> <li>Premium grade</li> <li>Outstanding adhesion</li> <li>Resists cracking and peeling</li> <li>Excellent waterproofing capabilities</li> </ul> |
| RECOMMENDED SUBSTRATES    | Over metal, polyurethane foam, cured concrete, smooth BUR, modified bitumen, granular cap sheets, EPDM, Hypalon® and other approved surfaces.                      | Over metal, polyurethane foam, cured concrete, smooth BUR, modified bitumen, granular cap sheets, EPDM, Hypalon® and other approved surfaces.                     | Over metal, smooth BUR, modified bitumen, granular cap sheets and other approved surfaces.   | Over metal, polyurethane foam, concrete, smooth BUR, modified bitumen, granular cap sheets, EPDM, Hypalon and other approved surfaces.  | Over metal, polyurethane foam, concrete, smooth BUR, modified bitumen, granular cap sheets, EPDM, Hypalon and other approved surfaces.   | Over metal, polyurethane foam, concrete, smooth BUR, modified bitumen, granular cap sheets, EPDM, Hypalon and other approved surfaces.  | Over metal, polyurethane foam, concrete, smooth BUR, modified bitumen, granular cap sheets, EPDM, Hypalon and other approved surfaces.  | Over metal, polyurethane foam, concrete, smooth BUR, modified bitumen, granular cap sheets, EPDM, Hypalon and other approved surfaces.   | Over metal, polyurethane foam, concrete, smooth BUR, modified bitumen, granular cap sheets, EPDM, Hypalon and other approved surfaces.  |
| USE WITH FABRIC/SEAM TAPE | ✓  | ✓   | ✓  | ✓   | ✓  | ✓   | ✓   | ✓  | ✓   |
| PART NUMBER               | KST044300 WHITE  | KST044500 WHITE   | KST042100 WHITE  | KST041300 WHITE   | KST041500 WHITE  | KST041505 WHITE   | KST41300T SEDONA TAN  | KST04130P PASTEL BASE<br>KST04130D DEEP BASE<br>KST04130A ACCENT BASE  | KST041325 BLACK   |
| SIZE                      | 5-GALLON, 55-GALLON DRUM   | 5-GALLON  | 5-GALLON, 55-GALLON DRUM, 250-GALLON TOTE  | 5-GALLON, 55-GALLON DRUM, 250-GALLON TOTE   | 5-GALLON, 55-GALLON DRUM, 250-GALLON TOTE  | 5-GALLON, 55-GALLON DRUM, 250-GALLON TOTE   | 5-GALLON, 55-GALLON DRUM  | 5-GALLON   | 5-GALLON, 55-GALLON DRUM  |
| VOC                       | < 50 g/L   | ≤ 246 g/L   | < 250 g/L  | ≤ 50 g/L  | < 50 g/L   | < 50 g/L  | ≤ 50 g/L  | < 50 g/L   | < 50 g/L  |
| APPROVALS                 |  |   |  |   |  |   |   |  |   |

Refer to the current MSDS/EDS for specific VOCs (calculated per 40 CFR 59.406).







# Aluminum Roof Coatings

Aluminum Finish Coats are proven to protect a roof surface from the elements. Provides a protective aluminum finish with waterproofing capabilities.




| PRODUCT NAME            | 500 PREMIUM ALUMINUM  | 300 COMMERCIAL ALUMINUM  | 204XB NON-FIBERED ALUMINUM   |
|-------------------------|---|--|--|
| TECHNOLOGY              | ASPHALT   | ASPHALT  | ASPHALT  |
| FEATURES AND BENEFITS   | <ul style="list-style-type: none"> <li>Brightest finish with enhanced aluminum</li> <li>Maximum coverage</li> <li>Fiber reinforced for lasting strength</li> <li>Resaturates to extend the life of asphalt and mod bit roofs</li> <li>Apply to slightly rusty metal roofs without a primer</li> </ul> | <ul style="list-style-type: none"> <li>Bright aluminum finish</li> <li>Very good coverage</li> <li>Fiber reinforced, basic protection</li> <li>Refreshes asphalt surfaces</li> <li>Apply to slightly rusty metal roofs without a primer</li> </ul> | <ul style="list-style-type: none"> <li>Non-fibered aluminum finish coat</li> <li>Good coverage</li> <li>Formulated from refined asphalt, aliphatic solvents, and ASTM D-962 aluminum paste</li> <li>Waterproof and adhesive properties of asphalt combined with the reflectivity of aluminum</li> <li>Reduces interior and exterior roof temperatures</li> </ul> |
| RECOMMENDED SUBSTRATES  | Over metal, smooth BUR, modified bitumen and other approved surfaces.   | Over metal, smooth BUR, modified bitumen and other approved surfaces.  | Over metal, smooth BUR, modified bitumen and other approved surfaces.  |
| CAN BE USED WITH FABRIC | ✓   | ✓  | ✓  |
| PART NUMBER             | KST020475 SILVER  | KST020480 SILVER   | KST0204XB SILVER   |
| SIZE                    | 5-GALLON, 55-GALLON DRUM  | 5-GALLON, 55-GALLON DRUM   | 5-GALLON   |
| VOC                     | 435 ± 10 g/L  | 450 ± 10 g/L   | <400 g/L   |
| APPROVALS               |     |  |  |



# Asphalt Emulsion Coatings

Asphalt Emulsion Coatings are manufactured through a unique process that allows asphalt to mix with water. This easy-to-apply coating can be used in a variety of applications.



| PRODUCT NAME           | FIBERED ASPHALT EMULSION   | NON-FIBERED ASPHALT EMULSION  |
|------------------------|--|---|
| TECHNOLOGY             | ASPHALT  | ASPHALT   |
| FEATURES AND BENEFITS  | <ul style="list-style-type: none"> <li>Reinforced with poly-fibers for extra strength and durable, easy-to-apply coating</li> <li>Outstanding abrasion resistance</li> <li>Exceptional weathering characteristics to prevent alligating and hardening</li> <li>Meets ASTM D1227, Type II, Class 1</li> </ul> | <ul style="list-style-type: none"> <li>Non-fibered for improved penetration and resaturating, easy-to-apply coating</li> <li>Outstanding abrasion resistance</li> <li>Exceptional weathering characteristics to prevent alligating and hardening</li> <li>Meets ASTM D1227, Type II, Class 1</li> </ul> |
| RECOMMENDED SUBSTRATES | Recommended for resurfacing extremely dried-out or heavily alligated surfaces on smooth built-up and modified bitumen roofs. Surface can then be coated with UNIFLEX® Elastomeric or Aluminum Coating systems.   | Recommended for resurfacing extremely dried-out or heavily alligated surfaces on smooth built-up and modified bitumen roofs. Surface can then be coated with UNIFLEX® Elastomeric or Aluminum Coating systems.  |
| USE WITH FABRIC        | ✓  | ✓   |
| PART NUMBER            | KST040312 BLACK  | KST040314 BLACK   |
| SIZE                   | 5-GALLON, 55-GALLON DRUM   | 5-GALLON, 55-GALLON DRUM  |
| VOC                    | < 0 g/L  | 0 g/L   |
| APPROVALS              |   |   |

Refer to the current MSDS/EDS for specific VOCs (calculated per 40 CFR 59.406).





# Basecoats and Primers

Proper surface preparation is key to a successful coating job. UNIFLEX® offers a full line of basecoats and primers.

Refer to the current MSDS/EDS for specific VOCs (calculated per 40 CFR 59.406).



| PRODUCT NAME              | SILICONE44™ SILICONE RUBBERIZED GRAY ROOF COATING  | SOLVENT-BASED ELASTOMERIC GRAY  | PREMIUM ELASTOMERIC GRAY  | COMMERCIAL GRADE ELASTOMERIC GRAY   | SINGLE PLY ELASTOMERIC ACRYLIC GRAY BASECOAT  | ELASTOMERIC MB BASECOAT  | RUST INHIBITIVE METAL PRIMER   | ACRYLIC RUST INHIBITIVE METAL PRIMER  | BLACK ASPHALT PRIMER  | ACRYLIC CONCRETE PRIMER   | BOND-IT WASH   |
|---------------------------|--|---|---|---|---|--|--|---|---|---|--|
| TECHNOLOGY                | 100% SILICONE  | SOLVENT-BASED THERMOPLASTIC   | 100% ACRYLIC ELASTOMERIC  | 100% ACRYLIC ELASTOMERIC  | ACRYLIC   | 100% ACRYLIC ELASTOMERIC   | ALKYD  | ACRYLIC   | ASPHALT   | ACRYLIC   | 100% WATER BASED   |
| FEATURES AND BENEFITS     | <ul style="list-style-type: none"> <li>Ideal for ponding water</li> <li>Can be used as a basecoat or finish coat</li> <li>Superior adhesion to most roofing substrates</li> <li>Limited lifetime warranty</li> </ul> | <ul style="list-style-type: none"> <li>Premium grade</li> <li>Outstanding adhesion</li> <li>Resists cracking and peeling in ponding water situations</li> <li>Excellent waterproofing capabilities</li> <li>Can be used as a basecoat or finish coat</li> </ul> | <ul style="list-style-type: none"> <li>Premium grade</li> <li>Outstanding adhesion</li> <li>Resists cracking and peeling</li> <li>Excellent waterproofing capabilities</li> <li>Can be used as a basecoat or finish coat</li> </ul> | <ul style="list-style-type: none"> <li>Commercial grade</li> <li>Excellent adhesion</li> <li>Great performance and value</li> <li>Can be used as a basecoat or finish coat</li> </ul> | <ul style="list-style-type: none"> <li>Cross-linking acrylic polymer for enhanced adhesion</li> <li>Must be topcoated by UNIFLEX Elastomeric Finish Coat</li> </ul> | <ul style="list-style-type: none"> <li>Outstanding adhesion</li> <li>Resists cracking and peeling</li> <li>Excellent waterproofing capabilities</li> <li>Must be topcoated by UNIFLEX Elastomeric Finish Coat</li> </ul> | <ul style="list-style-type: none"> <li>Superior corrosion resistance</li> <li>Meets Federal Specification TT-P-636D</li> </ul> | <ul style="list-style-type: none"> <li>Corrosion-resistant primer for metal roof surfaces</li> <li>Good adhesion to difficult surfaces, including pre-finished metal roofing containing fluorocarbon</li> </ul> | <ul style="list-style-type: none"> <li>Restores oils and rejuvenates dried-out asphalt surfaces, such as smooth surface buildup and modified bitumen roofs prior to coating with UNIFLEX Aluminum Coatings</li> </ul> | <ul style="list-style-type: none"> <li>High-performance primer</li> <li>Highly alkali and efflorescence resistant</li> <li>Can be applied to surfaces with a pH of 6 to 13</li> </ul> | <ul style="list-style-type: none"> <li>Acts as a cleaning primer for EPDM membranes by breaking the chemical bond of the inorganics on the surface of the rubber membrane, preparing the surface for the UNIFLEX Elastomeric Coating system</li> </ul> |
| RECOMMENDED SUBSTRATES    | Over metal, polyurethane foam, cured concrete, smooth BUR, modified bitumen, granular cap sheets, EPDM, Hypalon® and other approved surfaces.  | Over metal, smooth BUR, modified bitumen, granular cap sheets and other approved surfaces.  | As a basecoat, can be used over metal, concrete, and polyurethane foam. Refer to Product Data Sheet for additional recommended substrates if used as a finish coat.   | As a basecoat, can be used over metal, concrete, and polyurethane foam. Refer to Product Data Sheet for additional recommended substrates if used as a finish coat.                   | Over weathered EPDM, Hypalon TPO and other approved single-ply membranes.   | Over smooth BUR, modified bitumen, granular cap sheets and other approved surfaces.  | All types of metal surfaces, including iron and steel, where corrosion is a problem.   | All types of metal surfaces, including iron and steel, where corrosion is a problem. Over pre-finished metal surfaces including fluorocarbon (Kynar®).  | Over smooth BUR and modified bitumen.   | Seals and adheres to concrete.  | Over single ply.   |
| USE WITH FABRIC/SEAM TAPE | ✓  | ✓   | ✓   | ✓   | ✓   | ✓  | ✓  | ✓   | ✓   | ✓   |  |
| PART NUMBER               | KST044320 GRAY   | KST042200 GRAY  | KST041320 GRAY  | KST041520 GRAY  | KST041321 GRAY  | KST041510 WHITE<br>KST041512 GRAY  | KST034520 RED  | KST036520 WHITE   | KST020412 BLACK   | KST036500 WHITE   | KST038620 CLEAR  |
| SIZE                      | 5-GALLON, 55-GALLON DRUM   | 5-GALLON, 55-GALLON DRUM  | 5-GALLON, 55-GALLON DRUM, 250-GALLON TOTE   | 5-GALLON, 55-GALLON DRUM  | 5-GALLON, 55-GALLON DRUM  | 5-GALLON, 55-GALLON DRUM, 250-GALLON TOTE (WHITE)  | 5-GALLON, 55-GALLON DRUM   | 5-GALLON, 55-GALLON DRUM  | 55-GALLON DRUM  | 5-GALLON  | 5-GALLON   |
| VOC                       | < 50 g/L   | < 250 g/L   | < 50 g/L  | < 50 g/L  | ≤ 50 g/L  | < 50 g/L   | ≤ 400 g/L  | < 50 g/L  | < 350 g/L   | 96 g/L  | 0 g/L  |

## APPROVALS





# Patch and Repair: Roof Coatings, Fabrics and Tapes

Stop leaks and roof deterioration with our patch and repair products.



| PRODUCT NAME                     | ACRYLIC PATCHING CEMENT   | SLOPE BUILDER  | SKYLIGHT RESTORATIVE CLEAR COATING  | WET-DRY ROOF CEMENT  | POLYESTER FABRIC   | BUTYL SEAM TAPE   | MS HYBRID TAPE  |
|----------------------------------|---|--|---|--|--|---|---|
| <b>TECHNOLOGY</b>                | ACRYLIC BASED ELASTOMERIC RESIN   | 100% ACRYLIC ELASTOMERIC   | 100% ACRYLIC  | ASPHALT  | POLYESTER  | BUTYL RUBBER  | MS HYBRID   |
| <b>FEATURES AND BENEFITS</b>     | <ul style="list-style-type: none"> <li>Provides a long-lasting, durable, resilient patch</li> <li>UV and water resistant with excellent resistance to mildew attack and weathering</li> </ul> | <ul style="list-style-type: none"> <li>Designed to build up low-lying areas on flat, low-sloped roofs</li> <li>Provides protective waterproofing solutions</li> </ul>  | <ul style="list-style-type: none"> <li>Protective coating over fiberglass skylight panels restoring the panel to its original condition</li> <li>Provides a durable, weather-resistant finish while increasing the panel's light translucent value</li> </ul> | <ul style="list-style-type: none"> <li>Single-component, asbestos-free, asphalt-based cement designed for roofing applications</li> <li>Seals quickly, will not pull apart or lose its bond, remains soft and pliable, and resists temperature change</li> <li>Can be applied to wet or dry surfaces, even underwater</li> </ul> | <ul style="list-style-type: none"> <li>Exceptionally strong material</li> <li>Accommodates expansion and contraction</li> <li>Use for reinforcement for all general roof repairs, seams, flashings, penetration areas and other roof detail areas</li> </ul> | <ul style="list-style-type: none"> <li>Self-adhering butyl rubber waterproofing tape</li> <li>Maintains its flexibility necessary to respond to dynamics of roof movement</li> <li>Seals seams, flashings, penetration areas and other roof detail areas</li> </ul> | <ul style="list-style-type: none"> <li>Creates immediate adhesion to roof substrate, even underwater</li> <li>Applies and adheres to wet surface 0 °F and maintains its thermal stability up to 300 °F</li> <li>Doesn't need to be coated over</li> </ul> |
| <b>RECOMMENDED SUBSTRATES</b>    | Repairs metal roof seams, penetration and wall flashings, small holes, splits, cracks, blisters in built-up, modified bitumen, polyurethane foam and concrete.                                | To create roof crickets around HVAC and around rooftop equipment. It is ideal for building up low-lying areas near drains, in valleys, along parapet walls and in the field of the roof prior to installing UNIFLEX Fluid Applied Roofing Systems. | Over fiberglass skylight panels.  | Adheres to asphaltic-based roofing substrates.   | Use in three-course methods with embedded fabrics with elastomeric or emulsion coatings.   | Seals seams, flashings, penetration areas and other roof detail areas.  | Used for repairing roofs prior to coating applications to seal holes, tears and seams in gutters, flashings, skylights, roofing membranes and more.   |
| <b>USE WITH FABRIC/SEAM TAPE</b> | ✓   | ✓  | ✓   | ✓  |  |   |   |
| <b>PART NUMBER</b>               | KST041220 WHITE   | KST0SLPBD GRAY   | KST019100 CLEAR   | KST058600 BLACK  | KST203850 WHITE<br>KST20385A WHITE<br>KST20385B WHITE<br>KST020385 WHITE   | KST020802<br>KST020804<br>KST020806<br>KST020808  | KST058004<br>KST058006  |
| <b>SIZE</b>                      | 2-GALLON, 5-GALLON  | 5-GALLON   | 5-GALLON  | 10 oz. CARTRIDGE,<br>1-GALLON, 3-GALLON,<br>5-GALLON   | 4" x 324', 6" x 324', 12" x 324',<br>40" x 324'  | 2" x 50', 4" x 50', 6" x 50',<br>8" x 50'   | 4" x 50', 6" x 50'  |
| <b>VOC</b>                       | < 50 g/L  | 0 g/L  | < 50 g/L  | < 260 g/L  | N/A  | N/A   | N/A   |



Refer to the current MSDS/EDS for specific VOCs (calculated per 40 CFR 59.406).

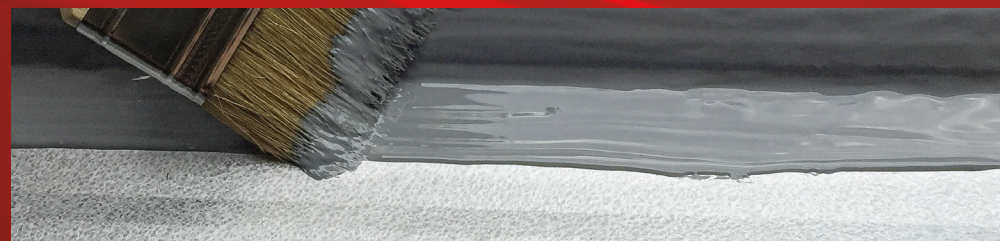
# Patch and Repair: Roof Sealants

Stop leaks and roof deterioration with our patch and repair products.



| PRODUCT NAME                   | ONE FLASH™ PERMANENT ROOF REPAIR SEALANT   | SILICONE 44-900™ SILICONE RUBBERIZED ROOF AND FLASHING SEALANT  | TRIPOLYMER ROOFING SEALANT   | MS HYBRID ROOFING SEALANT  | POLYURETHANE ROOFING SEALANT  | FAST-SKIN POLYURETHANE ROOFING SEALANT  | SOLVENT-BASED BRUSHABLE ROOF REPAIR SEALANT   | PITCH PAN ROOF SEALANT  |
|--------------------------------|--|---|--|--|---|---|---|---|
| TECHNOLOGY                     | MS HYBRID  | 100% SILICONE   | SOLVENT  | MS HYBRID  | POLYURETHANE  | POLYURETHANE  | SOLVENT   | HYBRID  |
| FEATURES AND BENEFITS          | <ul style="list-style-type: none"> <li>• Single-step application for reduced labor time</li> <li>• No fabric reinforcement required*</li> <li>• Easy application by brush or caulking gun</li> <li>• Remains flexible and strong</li> <li>• Excellent adhesion to multiple substrates</li> <li>• Can be recoated by traditional acrylic and silicone roof coatings</li> </ul> <p><small>*No fabric or tape needed for gaps less than 1/8".</small></p> | <ul style="list-style-type: none"> <li>• Durable, weather-resistant seal</li> <li>• Excellent adhesion</li> <li>• Permanently flexible</li> <li>• Can only be coated with silicone</li> </ul> | <ul style="list-style-type: none"> <li>• Primerless application</li> <li>• Excellent adhesion to many building surfaces, even when damp</li> <li>• Exceptional elongation and flexibility</li> </ul> | <ul style="list-style-type: none"> <li>• Applies, adheres and cures underwater</li> <li>• Two-products-in-one lap adhesive and scrim edge sealant</li> <li>• Remains flexible and will not shrink during curing</li> </ul> | <ul style="list-style-type: none"> <li>• Single-component urethane sealant that withstands extreme weather conditions</li> <li>• Primerless adhesion</li> <li>• Permanently flexible</li> </ul> | <ul style="list-style-type: none"> <li>• Single-component urethane sealant that cures by reaction with atmospheric moisture</li> <li>• Fast setup, no shrinkage</li> <li>• Both bonding and sealing applications</li> </ul> | <ul style="list-style-type: none"> <li>• Single-component, elastic sealant</li> <li>• Withstands water contact immediately after application</li> <li>• Fibered for strength, will function in severe UV, heat, acid rain and intermittent foot traffic</li> <li>• One-step application with no primer required</li> <li>• Applies in extreme temperature ranges, including wet and icy conditions</li> </ul> | <ul style="list-style-type: none"> <li>• Single component, semi-leveling</li> <li>• No mixing required</li> <li>• Water-resistant seal</li> <li>• Can be applied in wet conditions</li> </ul> |
| RECOMMENDED SUBSTRATES         | EPDM, aged TPO, aged PVC, metal, concrete, modified bitumen, asphalt and other common roof substrates.   | Adheres to EPDM, primed TPO, metal, concrete, mod bit, Hypalon®, asphalt shingles and other common roof substrates.   | Adheres to coated metal (Kynar®) brick, concrete, glass, vinyl, steel, tile, wood, asphalt and other common roof substrates.   | Adheres to coated metal (Kynar) EPDM, primed TPO, primed PVC, metal and other common roof substrates. Primed with UNIFLEX® TPO & PVC Adhesion Promoter.  | Adheres to steel, aluminum, coated metal (Kynar), masonry, wood, steel, asphalt shingles and other common roof substrates.  | Adheres to sheet metal, brick, wood, tile, steel, asphalt shingles and other common roof substrates.  | Adheres to many roofing materials, including damp, oily or slightly dirty surfaces. Not for use on EPDM.  | Metal, EPDM, primed TPO, primed PVC, concrete and other approved surfaces.  |
| TACK FREE/ CURE TIME           | Skin Time 30-60 Minutes / Full Cure 24 Hours   | 30 Minutes / 24 Hours   | 2 Hours / 4 to 6 Days  | 40 Minutes / 4 Days / 75 Minutes / 1 Day (Clear Only)  | 3 Hours / 1 Day   | 40 Minutes / 1 Day  | 4 Hours / 5 Days  | 40 Minutes / 1/8" to 1/4" per week  |
| APPLICATION TEMP/ SERVICE TEMP | 30 °F to 140 °F / -40 °F to 200 °F   | 35 °F to 160 °F   | 0 °F to 140 °F / -40 °F to 180 °F  | 30 °F to 120 °F / -40 °F to 200 °F   | -20 °F to 150 °F / -20 °F to 150 °F   | -20 °F to 150 °F / -20 °F to 150 °F   | -40 °F to 250 °F / -40 °F to 250 °F   | N/A   |
| PART NUMBER                    | KST051920 GRAY   | KST044900 WHITE   | KST058400 WHITE<br>KST058410 BLACK<br>KST058450 CLEAR  | KST058300 WHITE<br>KST058310 BLACK<br>KST058350 CLEAR  | KST058100 WHITE<br>KST058110 BLACK<br>KST058120 GRAY  | KST058200 WHITE<br>KST058210 BLACK  | KST058500 WHITE<br>KST058510 BLACK<br>KST058550 CLEAR   | KST058360 BLACK<br>2" Pitch Pan Fencing<br>KST058702<br>4" Pitch Pan Fencing<br>KST058704   |
| FILL LEVEL                     | 20 OZ. SAUSAGE, 2 GALLON, 5 GALLON   | 10 OZ. CARTRIDGE, 2 GALLON  | 10.3 OZ. CARTRIDGE   | 10.1 OZ. CARTRIDGE (WHITE, BLACK ONLY)<br>9.5 OZ. CARTRIDGE (CLEAR ONLY)   | 10.1 OZ. CARTRIDGE  | 10.1 OZ. CARTRIDGE  | 1-GALLON  | 67 OZ. POUCH  |
| VOC                            | < 1% wt  | < 3% wt   | 3.84% wt   | < 1% wt  | .25% wt   | .39% wt   | < 550 g/L   | 4 g/l   |

Refer to the current MSDS/EDS for specific VOCs (calculated per 40 CFR 59.406).





### REFLECTIVE WHITE ROOF COATINGS

| PRODUCT NUMBER | PRODUCT DESCRIPTION  | SIZE DESCRIPTION | SIZE CODE | SMIS CODE |
|----------------|--|------------------|-----------|-----------|
| KST041300      | Premium Elastomeric White Finish Coat                        | 5-Gallon         | 20        | 009921156 |
| KST041300      | Premium Elastomeric White Finish Coat                        | 55-Gallon Drum   | 27        | 009921164 |
| KST041300      | Premium Elastomeric White Finish Coat                        | 250-Gallon Tote  | 28        | 001556604 |
| KST041500      | Commercial Grade Elastomeric White Finish Coat               | 5-Gallon         | 20        | 009921248 |
| KST041500      | Commercial Grade Elastomeric White Finish Coat               | 55-Gallon Drum   | 27        | 009921255 |
| KST041500      | Commercial Grade Elastomeric White Finish Coat               | 250-Gallon Tote  | 28        | 001512920 |
| KST041505      | CoolMax41™ Hi-Build Elastomeric White Finish Coat            | 5-Gallon         | 20        | 651030165 |
| KST041505      | CoolMax41 Hi-Build Elastomeric White Finish Coat             | 55-Gallon Drum   | 27        | 651030298 |
| KST041505      | CoolMax41 Hi-Build Elastomeric White Finish Coat             | 250-Gallon Tote  | 28        | 651063224 |
| KST042100      | Premium Solvent-Based Thermoplastic Rubber White Finish      | 5-Gallon         | 20        | 650427750 |
| KST042100      | Premium Solvent-Based Thermoplastic Rubber White Finish      | 55-Gallon Drum   | 27        | 650427800 |
| KST042100      | Premium Solvent-Based Thermoplastic Rubber White Finish      | 250-Gallon Tote  | 28        | 650456585 |
| KST044300      | Silicone44™ Silicone Rubberized White Roof Coating           | 5-Gallon         | 20        | 650963036 |
| KST044300      | Silicone44 Silicone Rubberized White Roof Coating            | 55-Gallon Drum   | 27        | 650963051 |
| KST044500      | Silicone22™ Low Solid Silicone Rubberized White Roof Coating | 5-Gallon         | 20        | 102044062 |

### PIGMENTED ROOF COATINGS

| PRODUCT NUMBER | PRODUCT DESCRIPTION                                 | SIZE DESCRIPTION | SIZE CODE | SMIS CODE |
|----------------|---|------------------|-----------|-----------|
| KST04130A      | Premium Elastomeric Tint Bases – Accent Finish Coat | 5-Gallon         | 20        | 650118029 |
| KST04130D      | Premium Elastomeric Tint Bases – Deep Finish Coat   | 5-Gallon         | 20        | 650118011 |
| KST04130P      | Premium Elastomeric Tint Bases – Pastel Finish Coat | 5-Gallon         | 20        | 650118003 |
| KST041325      | Premium Elastomeric Black Finish Coat               | 5-Gallon         | 20        | 1556638   |
| KST41300T      | Premium Elastomeric Sedona Tan Finish Coat          | 5-Gallon         | 20        | 650340490 |
| KST41300T      | Premium Elastomeric Sedona Tan Finish Coat          | 55-Gallon Drum   | 27        | 650340524 |

### ALUMINUM ROOF COATINGS

| PRODUCT NUMBER | PRODUCT DESCRIPTION                           | SIZE DESCRIPTION | SIZE CODE | SMIS CODE |
|----------------|---|------------------|-----------|-----------|
| KST020475      | 500 Premium Aluminum Silver Finish Coat       | 5-Gallon         | 20        | 9921032   |
| KST020475      | 500 Premium Aluminum Silver Finish Coat       | 55-Gallon Drum   | 27        | 9921040   |
| KST020480      | 300 Commercial Aluminum Silver Finish Coat    | 5-Gallon         | 20        | 9921057   |
| KST020480      | 300 Commercial Aluminum Silver Finish Coat    | 55-Gallon Drum   | 27        | 8942385   |
| KST0204XB      | 204XB Non-Fibered Aluminum Silver Finish Coat | 5-Gallon         | 20        | 651080798 |

### ASPHALT EMULSION COATINGS

| PRODUCT NUMBER | PRODUCT DESCRIPTION          | SIZE DESCRIPTION | SIZE CODE | SMIS CODE |
|----------------|------------------------------|------------------|-----------|-----------|
| KST040312      | Fibered Asphalt Emulsion     | 5-Gallon         | 20        | 1512912   |
| KST040312      | Fibered Asphalt Emulsion     | 55-Gallon Drum   | 27        | 1556570   |
| KST040312      | Fibered Asphalt Emulsion     | 250-Gallon Tote  | 28        | 1556588   |
| KST040314      | Non-Fibered Asphalt Emulsion | 5-Gallon         | 20        | 9921123   |
| KST040314      | Non-Fibered Asphalt Emulsion | 55-Gallon Drum   | 27        | 1556588   |

### BASECOATS AND PRIMERS

| PRODUCT NUMBER | PRODUCT DESCRIPTION                               | SIZE DESCRIPTION | SIZE CODE | SMIS CODE |
|----------------|---|------------------|-----------|-----------|
| KST020412      | Black Asphalt Primer                              | 55-Gallon Drum   | 27        | 9921016   |
| KST034520      | Rust Inhibitive Metal Primer – Red                | 5-Gallon         | 20        | 9921107   |
| KST034520      | Rust Inhibitive Metal Primer – Red                | 55-Gallon Drum   | 27        | 1556562   |
| KST036520      | Acrylic Rust Inhibitive Primer – White            | 5-Gallon         | 20        | 650174808 |
| KST036520      | Acrylic Rust Inhibitive Primer – White            | 55-Gallon Drum   | 27        | 650389992 |
| KST036500      | Acrylic Concrete Primer                           | 5-Gallon         | 20        | 650467731 |
| KST038620      | Bond-It Wash Primer                               | 5-Gallon         | 20        | 9921115   |
| KST041320      | Premium Elastomeric Gray Basecoat                 | 5-Gallon         | 20        | 9921206   |
| KST041320      | Premium Elastomeric Gray Basecoat                 | 55-Gallon Drum   | 27        | 9921214   |
| KST041320      | Premium Elastomeric Gray Basecoat                 | 250-Gallon Tote  | 28        | 1556620   |
| KST041321      | Single Ply Elastomeric Acrylic Gray Basecoat      | 5-Gallon         | 20        | 9921222   |
| KST041321      | Single Ply Elastomeric Acrylic Gray Basecoat      | 55-Gallon Drum   | 27        | 9921230   |
| KST041510      | Elastomeric MB White Basecoat                     | 5-Gallon         | 20        | 9921263   |
| KST041510      | Elastomeric MB White Basecoat                     | 55-Gallon Drum   | 27        | 9921271   |
| KST041510      | Elastomeric MB White Basecoat                     | 250-Gallon Tote  | 28        | 1556646   |
| KST041512      | Elastomeric MB Gray Basecoat                      | 5-Gallon         | 20        | 650367840 |
| KST041512      | Elastomeric MB Gray Basecoat                      | 55-Gallon Drum   | 27        | 650367899 |
| KST041520      | Commercial Grade Elastomeric Gray Basecoat        | 5-Gallon         | 20        | 9921289   |
| KST041520      | Commercial Grade Elastomeric Gray Basecoat        | 55-Gallon Drum   | 27        | 9921297   |
| KST042200      | Premium Solvent-Based Elastomeric Gray Basecoat   | 5-Gallon         | 20        | 650427818 |
| KST042200      | Premium Solvent-Based Elastomeric Gray Basecoat   | 55-Gallon Drum   | 27        | 650427826 |
| KST042200      | Premium Solvent-Based Elastomeric Gray Basecoat   | 250-Gallon Tote  | 28        | 650456577 |
| KST044320      | Silicone44™ Silicone Rubberized Gray Roof Coating | 5-Gallon         | 20        | 650963069 |
| KST044320      | Silicone44 Silicone Rubberized Gray Roof Coating  | 55-Gallon Drum   | 27        | 650963077 |

### PATCH AND REPAIR: ROOF COATINGS, FABRICS AND TAPES

| PRODUCT NUMBER | PRODUCT DESCRIPTION                | SIZE DESCRIPTION | SIZE CODE | SMIS CODE |
|----------------|------------------------------------|------------------|-----------|-----------|
| KST019100      | Skylight Restorative Clear Coating | 5-Gallon         | 20        | 9920984   |
| KST041220      | Acrylic White Patching Cement      | 5-Gallon         | 20        | 9921149   |
| KST041220      | Acrylic White Patching Cement      | 2-Gallon         | 17        | 650467673 |
| KST0SLPBD      | Slope Builder                      | 5-Gallon         | 51        | 650391311 |



# Part Numbers

SKU Listings

## PATCH AND REPAIR : ROOF COATINGS, FABRICS AND TAPES (CONTINUED)

| PRODUCT NUMBER | PRODUCT DESCRIPTION                            | SIZE DESCRIPTION | SIZE CODE | SMIS CODE |
|----------------|--|------------------|-----------|-----------|
| KST020802      | Seam Tape 2" x 50"                             | 2" x 56"         | 99        | 009921073 |
| KST020804      | Seam Tape 4" X 50'                             | 4" x 50'         | 99        | 009921081 |
| KST020806      | Seam Tape 6" X 50'                             | 6" x 50'         | 99        | 009921099 |
| KST020808      | Seam Tape 8" X 50'                             | 8" x 50'         | 99        | 001556554 |
| KST020385      | Polyester Fabric 40" X 324'                    | 40" x 324'       | 99        | 009920992 |
| KST058004      | MS Hybrid 4" Roof Bonding Tape – Fleece Backed | 4" x 50'         | 99        | 650433378 |
| KST058006      | MS Hybrid 6" Roof Bonding Tape – Fleece Backed | 6" x 50'         | 99        | 650433386 |
| KST058600      | Wet-Dry Roof Cement                            | 10 oz.           | 01        | 650441769 |
| KST058600      | Wet-Dry Roof Cement                            | 128 oz.          | 16        | 650442643 |
| KST058600      | Wet-Dry Roof Cement                            | 3-Gallon         | 30        | 650442692 |
| KST058600      | Wet-Dry Roof Cement                            | 5-Gallon         | 20        | 650442684 |
| KST203850      | Polyester Fabric 4" X 324'                     | 4" x 324'        | 99        | 650830391 |
| KST20385A      | Polyester Fabric 6" X 324'                     | 6" x 324'        | 99        | 009921339 |
| KST20385B      | Polyester Fabric 12" X 324'                    | 12" x 324'       | 99        | 650201742 |

## APPLICATORS

| PRODUCT NUMBER | PRODUCT DESCRIPTION            | SIZE DESCRIPTION | SIZE CODE | SMIS CODE |
|----------------|--------------------------------|------------------|-----------|-----------|
| KST020504      | 4" Hand Held Roof Brush        | Each             | 99        | 650483050 |
| KST020510      | 10" Roof Brush Head Threaded   | Each             | 99        | 650483076 |
| KST020560      | 60" Roof Brush Handle Threaded | Each             | 99        | 650483084 |

## WET SAMPLE KITS

| PRODUCT NUMBER | PRODUCT DESCRIPTION                             | SIZE DESCRIPTION | SIZE CODE | SMIS CODE |
|----------------|---|------------------|-----------|-----------|
| KST010000      | Metal Restoration Wet Sample Kit                | Each             | 99        | 650496185 |
| KST011000      | Single Ply Restoration Wet Sample Kit           | Each             | 99        | 650496201 |
| KST012000      | BUR/Modified Bitumen Restoration Wet Sample Kit | Each             | 99        | 650514045 |
| KST013000      | SBE Restoration Wet Sample Kit                  | Each             | 99        | 650514078 |

## PATCH & REPAIR: ROOFING SEALANTS

| PRODUCT NUMBER | PRODUCT DESCRIPTION  | SIZE DESCRIPTION | SIZE CODE | SMIS CODE |
|----------------|--|------------------|-----------|-----------|
| KST044900      | Silicone 44-900™ Silicone Rubberized Roof and Flashing Sealant – White | 10 oz. Cart      | 01        | 650971245 |
| KST044900      | Silicone 44-900 Silicone Rubberized Roof and Flashing Sealant – White  | 2-Gallon         | 17        | 650971252 |
| KST051920      | One Flash™ Permanent Roof Repair Sealant – Gray                        | 2-Gallon         | 17        | 651038820 |
| KST051920      | One Flash Permanent Roof Repair Sealant – Gray                         | 5-Gallon         | 20        | 651038846 |
| KST051920      | One Flash Permanent Roof Repair Sealant – Gray                         | 20 oz. Sausage   | 43        | 651047557 |
| KST058100      | Polyurethane Roofing Sealant – White                                   | 10.1 oz.         | 01        | 650432925 |
| KST058110      | Polyurethane Roofing Sealant – Black                                   | 10.1 oz.         | 01        | 650436256 |
| KST058120      | Polyurethane Roofing Sealant – Gray                                    | 10.1 oz.         | 01        | 650432982 |
| KST058200      | Fast-Skin Polyurethane Roofing Sealant – White                         | 10.1 oz.         | 01        | 650433006 |
| KST058210      | Fast-Skin Polyurethane Roofing Sealant – Black                         | 10.1 oz.         | 01        | 650433022 |
| KST058300      | MS Hybrid Roofing Sealant – White                                      | 10.1 oz.         | 01        | 650433089 |
| KST058310      | MS Hybrid Roofing Sealant – Black                                      | 10.1 oz.         | 01        | 650433097 |
| KST058350      | MS Hybrid Roofing Sealant – Clear                                      | 9.5 oz.          | 01        | 650433105 |
| KST058360      | Pitch Pan Roofing Sealant – Black                                      | 67 oz.           | LT        | 650983620 |
| KST058400      | Tripolymer Roofing Sealant – White                                     | 10.3 oz.         | 01        | 650433196 |
| KST058410      | Tripolymer Roofing Sealant – Black                                     | 10.3 oz.         | 01        | 650433212 |
| KST058450      | Tripolymer Roofing Sealant – Clear                                     | 10.3 oz.         | 01        | 650433121 |
| KST058500      | Solvent-based Brushable Roof Repair Sealant – White                    | 128 oz.          | 16        | 650433261 |
| KST058510      | Solvent-based Brushable Roof Repair Sealant – Black                    | 128 oz.          | 16        | 650433279 |
| KST058550      | Solvent-based Brushable Roof Repair Sealant – Clear                    | 128 oz.          | 16        | 650433253 |
| KST058702      | 2" Pitch Pan Fencing   | 2" x 56"         | 99        | 650983596 |
| KST058704      | 4" Pitch Pan Fencing   | 4" x 56"         | 99        | 650983604 |